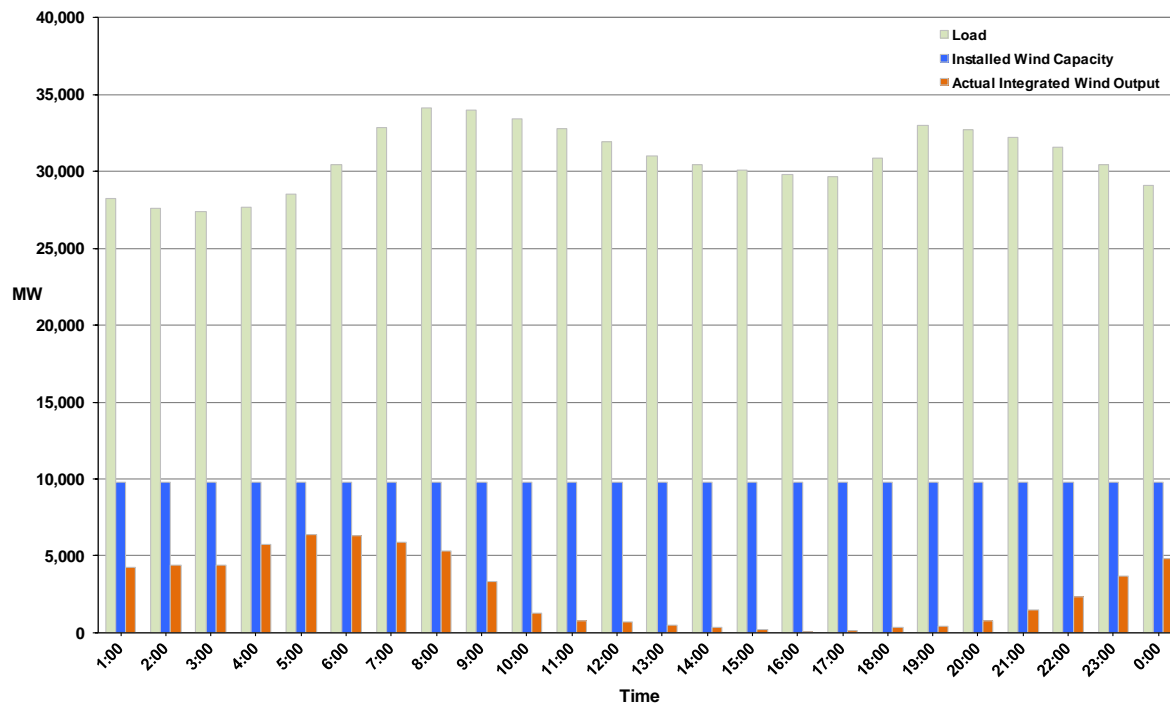




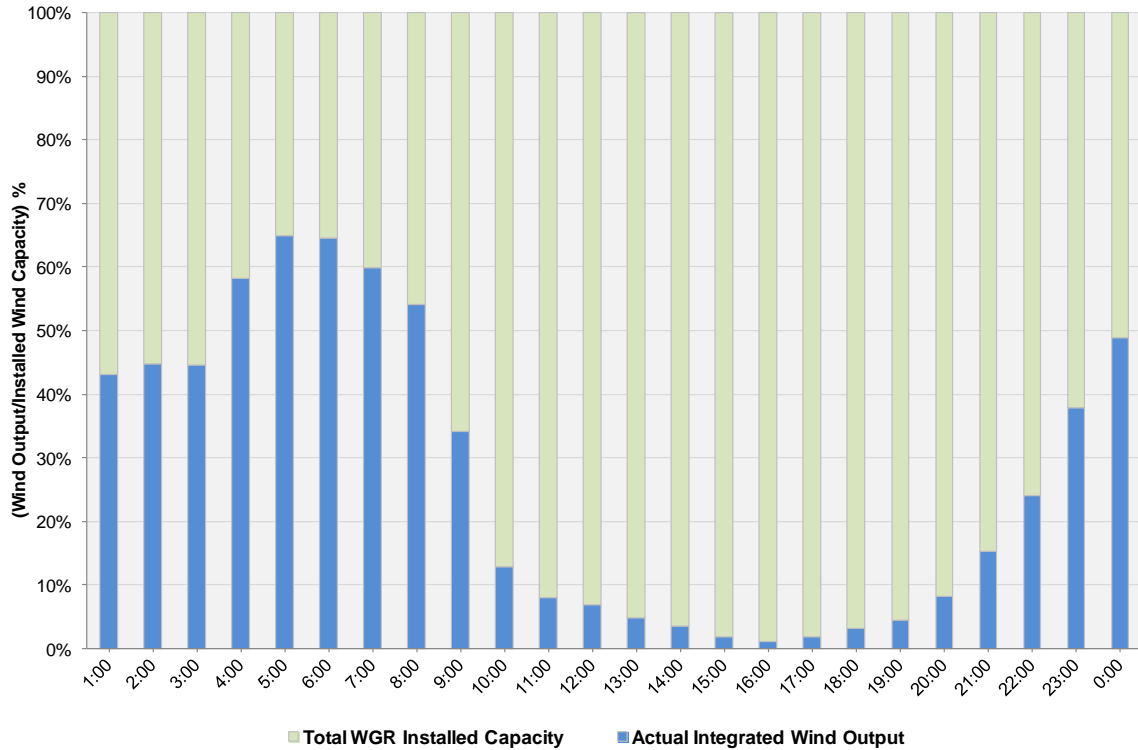
## ERCOT Grid Operations Wind Integration Report: 12/30/11

Peak Load	34,113 MW
Load Peak Hour (HE)	08
Wind over Peak	5,302 MW
Wind Record 10/07/11	7,400 MW
Max Wind Value	6,623 MW
Wind Peak Time	05:01
Wind Integration %	22.53%

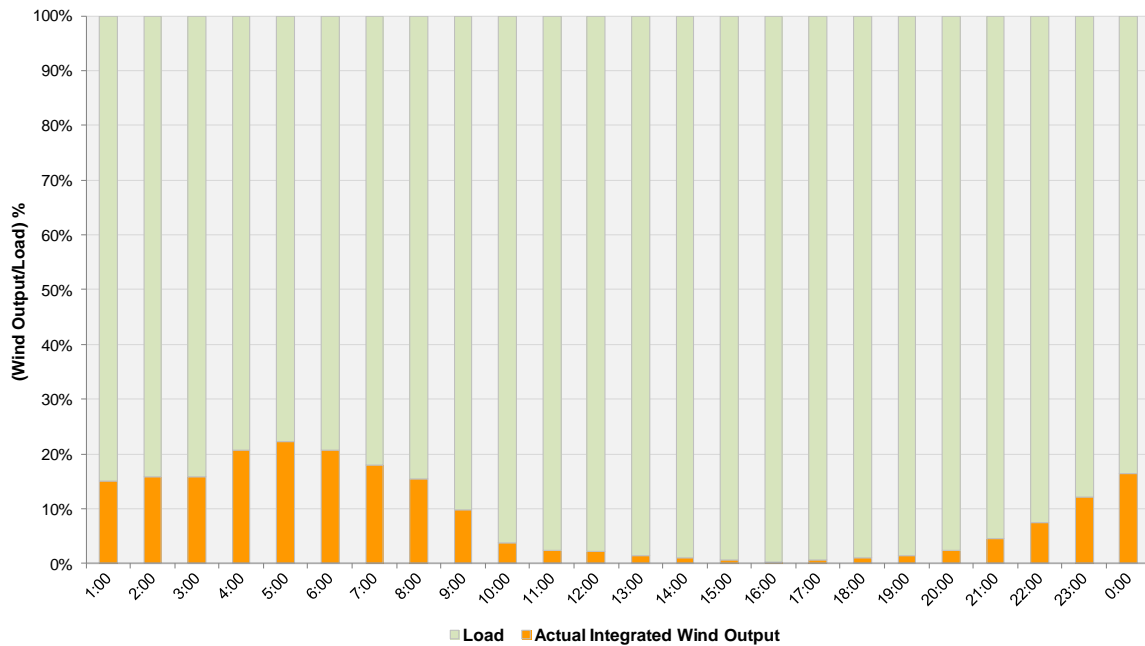
Hourly Average Actual Load vs. Actual Wind Output  
12-30-2011



**Actual Wind Output as a Percentage of the Total Installed Wind Capacity**  
**12-30-2011**



**Actual Wind Output as a Percentage of the ERCOT Load**  
**12-30-2011**



ERCOT Load vs. Actual Wind Output 12/23/2011 - 12/30/2011

